

Governor Dashboard (2013)

Outwood Academy Ripon

LA: North Yorkshire

DFE: 8154203

Date produced: October 2013

Version 1

The Governor Dashboard has been produced by FFT, working in partnership with the National Governors' Association and the Wellcome Trust. The dashboard will help school governors to hold schools to account, support and challenge the leadership team and make more informed strategic decisions.

The dashboard can be used to answer **six key questions:**

1. How does attainment and pupil progress compare to the national average?
2. How are we performing in different subjects?
3. Do we have any under-performing pupils?
4. How might the context of our school affect our performance?
5. How does pupil attendance compare to the national average?
6. What are the strengths and weaknesses of our school?

Guidance for governors

Gauges: underneath the gauges we indicate whether results and progress are in line with the national average, or significantly above or below the national average.

Strengths & Weaknesses: these are relative to your school and calculated using Value Added Average Point Score over 3 years (minimum 5 pupils in a group).

Statistical significance: green stars (★) and red circles (●) highlight where pupil progress is significantly above or below the national average.

Small pupil cohorts: for small pupil cohorts we will suppress the actual data with a diamond (◆). Where it is not possible to calculate a figure or if data is not available this will be shown by a dash (-).

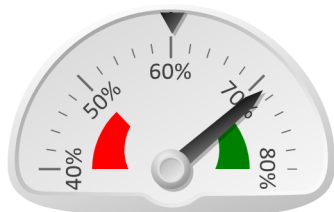
Data sources: the governor dashboard is generated using data from FFTLive which includes data sourced from the DFE (National Pupil Database) and data calculated by FFT. The headline performance indicators will be consistent with RAISEonline and the DFE School Performance Tables and data.

Further support materials for governors, including a brief training guide can be downloaded from the FFT website at www.fft.org.uk

Outwood Academy Ripon (2013)

Pupil Results - Attainment (2013)

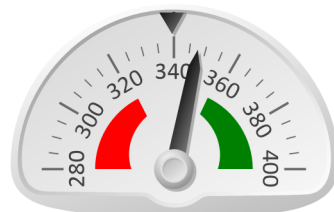
% 5+ A*-C incl Eng & Maths



71%

Results are significantly above the national average (60%)

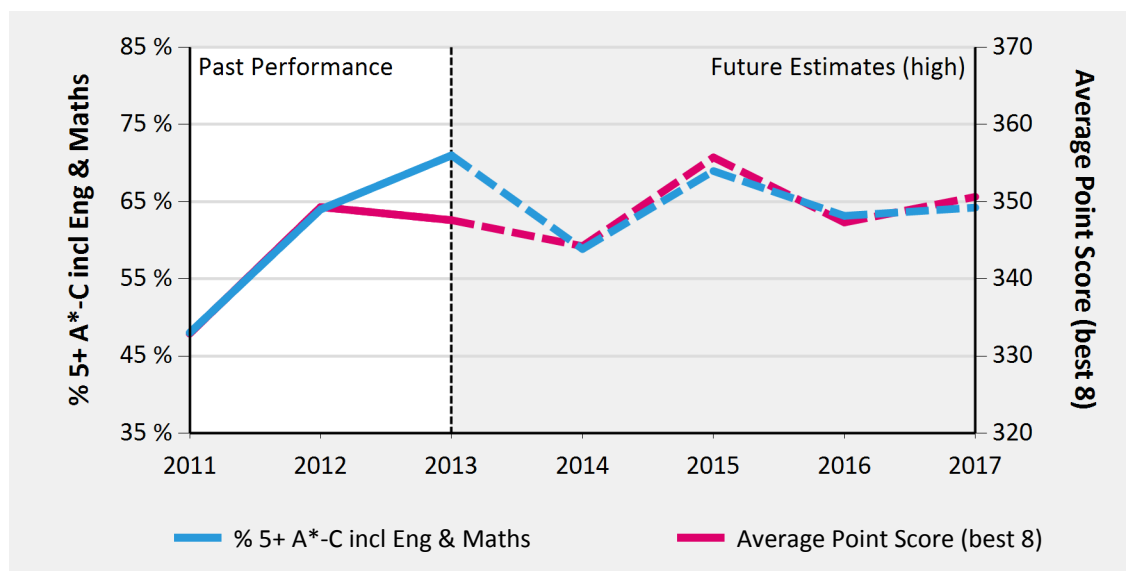
Average Point Score (best 8)



348

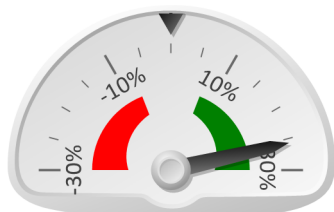
Results are in line with the national average (339)

Key Stage 4 Headline Performance



Pupil Progress - Achievement (2013)

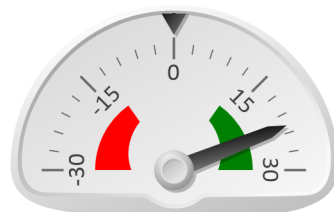
% 5+ A*-C incl Eng & Maths



26%

Progress is significantly above the national average of zero

Average Point Score (best 8)



23

Progress is significantly above the national average of zero

Key Stage 4 Performance Summary

	Actual Results			Pupil Progress (Act vs Est)		
	2011	2012	2013	2011	2012	2013
Number of Pupils	84	86	96	-	-	-
% 5+ A*-C incl Eng & Maths	48%	64% ★	71%	1%	★ 17%	★ 26%
Average Point Score (best 8)	333	349	348	6	★ 22	★ 23
Average Grade (GCSE only)	D+	C-	D+	0.1	★ 0.4	0.2
% pupils achieving 5+ A*-A	● 1%	● 2%	● 4%	-4%	-4%	-1%
% 3 Levels Progress - English	79%	★ 88%	★ 82%	★ 9%	★ 23%	★ 19%
% 3 Levels Progress - Maths	59%	★ 81%	76%	1%	★ 17%	★ 13%

Relative Strengths and Weaknesses (3 years)

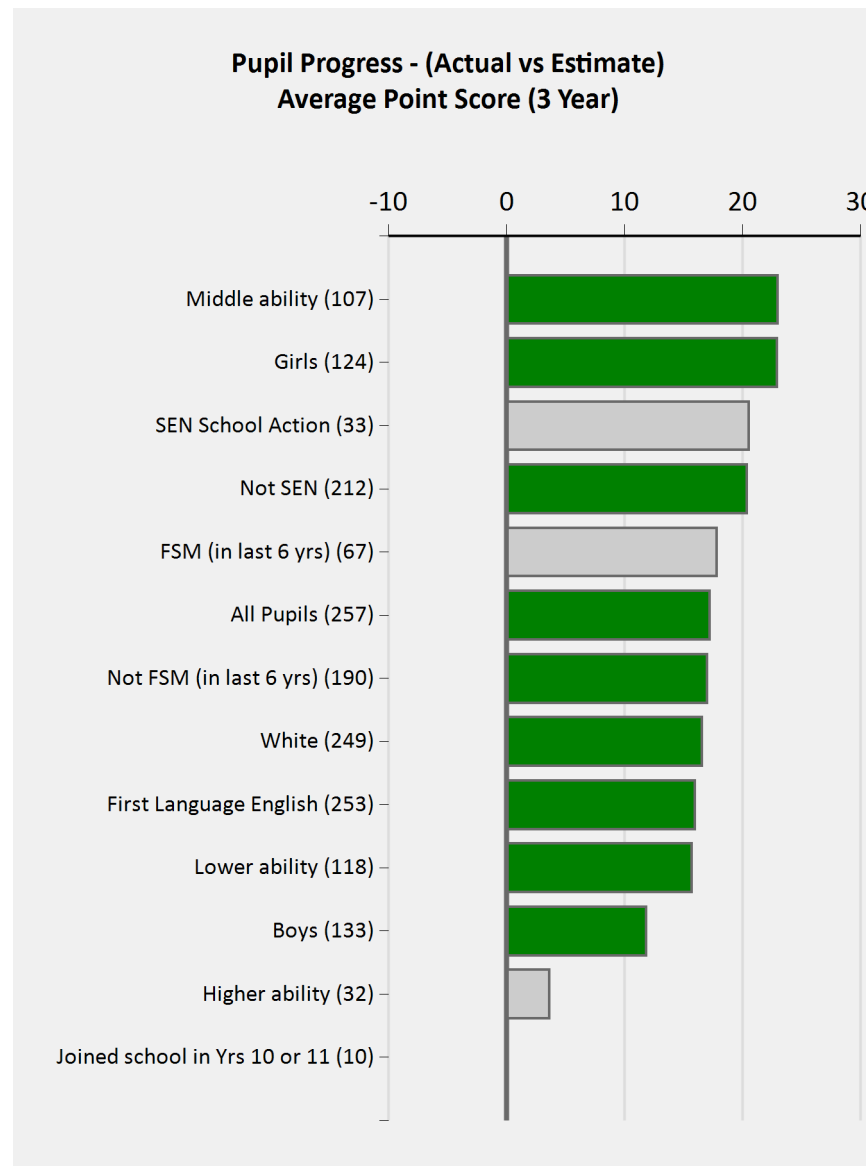
	Stronger Areas	Weaker Areas
Pupil Groups	Middle ability Girls Service Pupil - Yes	Higher ability Boys Lower ability
Subjects	English Language & Literature French Media/Film/Tv Studies	D&T Textiles Technology Art & Design History

Outwood Academy Ripon (2013)

GCSE subject performance (2013)

	Pupils	Actual Results			Pupil Progress (Act vs Est)		
		Average Grade	%A*-A	%A*-C	Average Grade	%A*-A	%A*-C
Art & Des(Graphcs)	26	D+	19%	38%	● -0.9	0%	● -37%
Art & Design	20	D-	15%	45%	● -1.3	-2%	● -24%
Biology	16	B-	31%	100%	0.1	5%	★ 14%
Chemistry	16	B-	25%	94%	0.1	-2%	8%
D&T Food Technolgy	24	C-	4%	67%	0.3	-4%	11%
D&T Textiles Tech.	17	E+	0%	47%	● -1.3	-13%	● -7%
English	96	C	10%	76%	★ 0.8	★ 7%	★ 32%
French	20	C+	10%	70%	0.3	-3%	12%
Geography	12	D-	0%	50%	-0.5	-8%	0%
History	15	D-	7%	40%	● -1.5	-15%	● -27%
Inform Comm Tech	7	E+	0%	14%	● -1.4	-11%	● -46%
Law	7	F-	0%	29%	● -1.6	-3%	3%
Mathematics	96	C-	8%	77%	★ 0.5	2%	★ 23%
Media/Film/TV Std	14	C	7%	79%	0.5	-2%	16%
Physics	16	B	25%	100%	0.3	1%	★ 15%

Pupil groups - achievement over 3 years



Outwood Academy Ripon (2013)

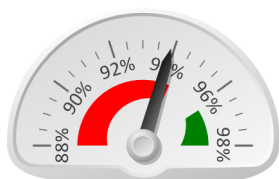
Pupil Context (Year 11, 2013)

		Pupils	School	National
Summary	All Pupils	96	100%	100%
	Girls	47	49%	49%
	Boys	49	51%	51%
Prior Attainment	Higher ability	10	10%	32%
	Middle ability	39	41%	35%
	Lower ability	46	48%	33%
SEN	SEN School Action	17	18%	11%
	SEN School Action +	2	2%	6%
	SEN Statement	2	2%	4%
	Not SEN	75	78%	79%
Free School Meals	FSM (in last 6 yrs)	33	34%	26%
	Not FSM (in last 6 yrs)	63	66%	74%
Ethnicity	White	93	97%	80%
	Black African	2	2%	4%
	Any Other	1	1%	3%
First Language	First Language not English	1	1%	12%
	First Language English	95	99%	88%
Mobility	Joined school in Yrs 10 or 11	3	3%	2%

School Absence (Year 7 to Year 11, 2013)

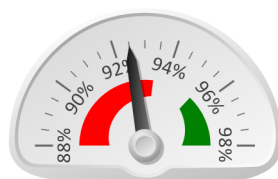
		Pupils	Absence		Persistent Absentees	
			School	National	School	National
Summary	All Pupils	428	8%	6%	15%	7%
	Girls	207	8%	6%	16%	8%
	Boys	218	8%	6%	15%	7%
Prior Attainment	Higher ability	58	4%	4%	2%	3%
	Middle ability	152	7%	6%	12%	6%
	Lower ability	207	10%	8%	22%	13%
SEN	SEN School Action	66	10%	7%	23%	11%
	SEN School Action +	18	13%	10%	28%	18%
	SEN Statement	5	8%	8%	20%	13%
	Not SEN	336	7%	5%	13%	6%
Free School Meals	FSM (in last 6 yrs)	114	13%	8%	32%	14%
	Not FSM (in last 6 yrs)	311	6%	5%	9%	5%
Ethnicity	White	408	8%	6%	15%	8%
	Black Caribbean	1	♦	6%	♦	8%
	Black African	6	5%	4%	0%	3%
	Chinese	1	♦	2%	♦	1%
	Any Other	3	♦	5%	♦	6%
	No Information	1	♦	6%	♦	9%
First Language	First Language not English	11	12%	5%	27%	5%
	First Language English	414	8%	6%	15%	8%

Year 7 Attendance



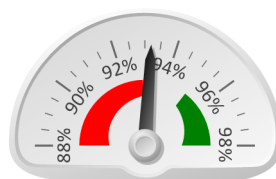
93.9%

Year 8 Attendance



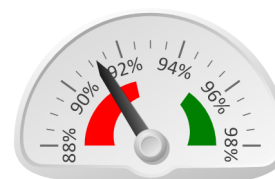
92.5%

Year 9 Attendance



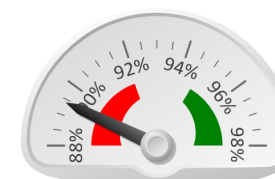
93.2%

Year 10 Attendance



91.2%

Year 11 Attendance



89.4%