

# Governor Dashboard (2013)

## St Ursula's Catholic Junior School

LA: Havering

DFE: 3113504

Date produced: January 2014

Version 2

The Governor Dashboard has been produced by FFT, working in partnership with the National Governors' Association and the Wellcome Trust. The dashboard will help school governors to hold schools to account, support and challenge the leadership team and make more informed strategic decisions.

The dashboard can be used to answer **six key questions**:

1. How does attainment and pupil progress compare to the national average?
2. How are we performing in different subjects?
3. Do we have any under-performing pupils?
4. How might the context of our school affect our performance?
5. How does pupil attendance compare to the national average?
6. What are the strengths and weaknesses of our school?

## Guidance for governors

**Gauges:** underneath the gauges we indicate whether results and progress are in line with the national average, or significantly above or below the national average.

**Strengths & Weaknesses:** these are relative to your school and calculated using Added Average Point Score over 3 years (minimum 5 pupils in a group).

**Statistical significance:** green stars (★) and red circles (●) highlight where pupil progress is significantly above or below the national average.

**Small pupil cohorts:** for small pupil cohorts we will suppress the actual data with a diamond (◆). Where it is not possible to calculate a figure or if data is not available this will be shown by a dash (-).

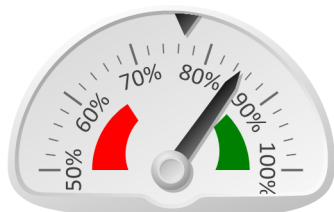
**Data sources:** the governor dashboard is generated using data from FFTLive which includes data sourced from the DFE (National Pupil Database) and data calculated by FFT. The headline performance indicators will be consistent with RAISEonline and the DFE School Performance Tables and data.

Further support materials for governors, including a brief training guide can be downloaded from the FFT website at [www.fft.org.uk](http://www.fft.org.uk)

# St Ursula's Catholic Junior School (2013)

## Pupil Results - Attainment (2013)

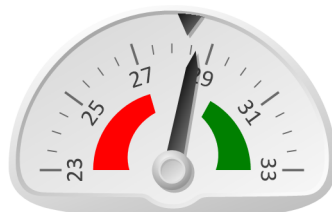
% Level 4+ (Re, Wri, Ma)



**85%**

Results are in line with the national average (77%)

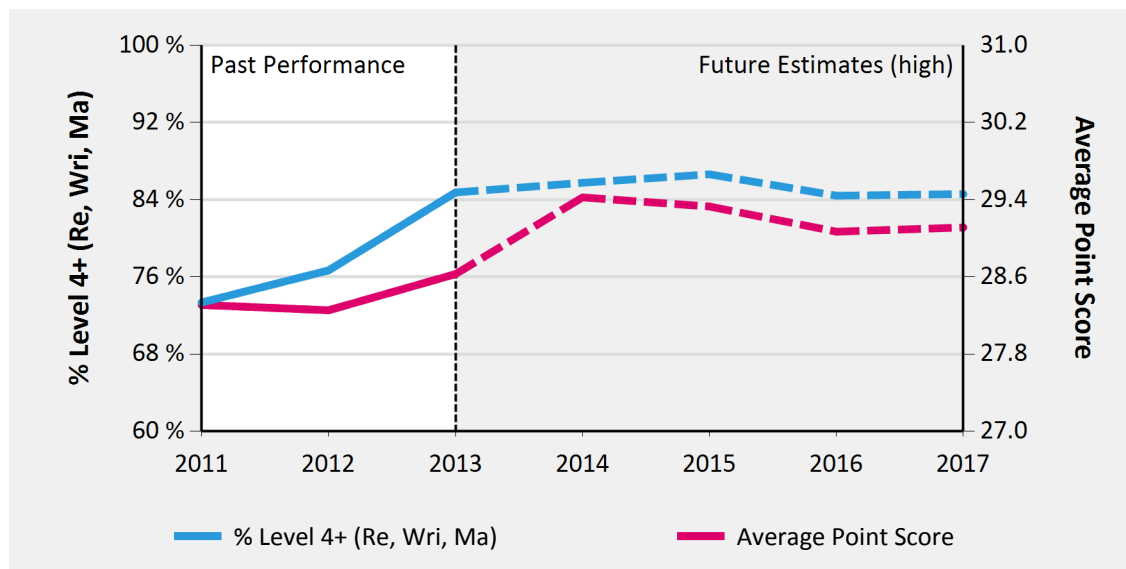
Average Point Score



**28.6**

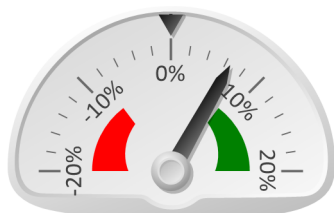
Results are in line with the national average (28)

## Key Stage 2 Headline Performance



## Pupil Progress - Achievement (2013)

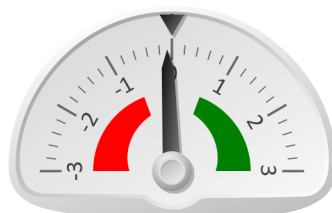
% Level 4+ (Re, Wri, Ma)



**7%**

Progress is in line with the national average of zero

Average Point Score



**-0.1**

Progress is in line with the national average of zero

## Key Stage 2 Performance Summary

	Actual Results			Pupil Progress (Act vs Est)		
	2011	2012	2013	2011	2012	2013
Number of Pupils	60	60	59	-	-	-
% Level 4+ (Re, Wri, Ma)	73%	77%	85%	3%	-4%	7%
% Level 5+ (Re, Wri, Ma)	17%	20%	14%	4%	0%	-6%
Average Point Score	28.3	28.3	28.6	0.3	-0.6	-0.1
% 2 Levels Progress - Reading	95%	95%	91%	5%	2%	3%
% 2 Levels Progress - Writing	86%	88%	98%	6%	-3%	5%
% 2 Levels Progress - Maths	★ 95%	82%	93%	★ 12%	-7%	4%

## Relative Strengths and Weaknesses (3 years)

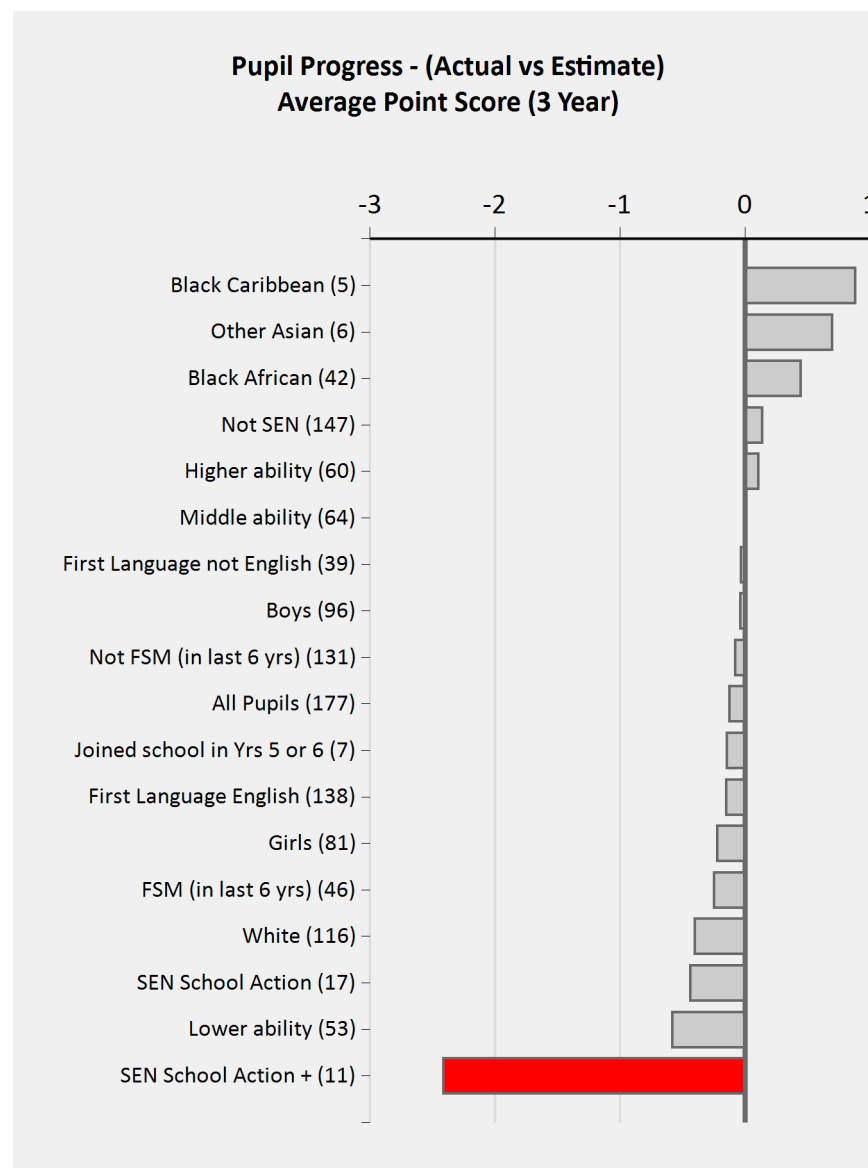
Stronger Areas	Weaker Areas
Black Caribbean	SEN School Action +
Other Asian	Lower ability
Black African	SEN School Action

# St Ursula's Catholic Junior School (2013)

## Key Stage 2 Subject Performance

	Actual Results			Pupil Progress (Act vs Est)		
	2011	2012	2013	2011	2012	2013
<b>Pupils</b>	60	60	59	-	-	-
<b>Reading</b>						
% Level 4+	90%	92%	93%	1%	0%	5%
% Level 4B+	78%	83%	78%	2%	0%	1%
% Level 5+	40%	52%	46%	-3%	1%	-1%
Average Point Score	28.5	29.3	28.7	0.1	0.2	0.0
<b>Writing</b>						
% Level 4+	82%	82%	86%	2%	-6%	-1%
% Level 5+	23%	27%	27%	5%	-2%	-4%
Average Point Score	26.8	27.1	27.6	0.4	-0.5	-0.2
<b>Mathematics</b>						
% Level 4+	★ 93%	83%	92%	7%	-7%	2%
% Level 4B+	73%	73%	83%	1%	-6%	6%
% Level 5+	38%	33%	41%	2%	-7%	1%
Average Point Score	28.7	28.0	28.9	0.4 ●	-1.0	0.0

## Pupil Groups: Achievement over 3 years



# St Ursula's Catholic Junior School (2013)

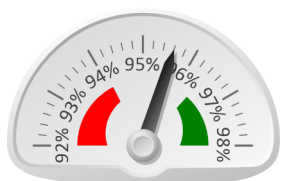
## Pupil Context (Year 6, 2013)

		Pupils	School	National
<b>Summary</b>	All Pupils	59	100%	100%
	Girls	30	51%	49%
	Boys	29	49%	51%
<b>Prior Attainment</b>	Higher ability	20	34%	33%
	Middle ability	21	36%	34%
	Lower ability	17	29%	33%
<b>SEN</b>	SEN School Action	3	5%	12%
	SEN School Action +	6	10%	8%
	SEN Statement	1	2%	3%
	Not SEN	49	83%	77%
<b>Free School Meals</b>	FSM (in last 6 yrs)	19	32%	31%
	Not FSM (in last 6 yrs)	40	68%	69%
<b>Ethnicity</b>	White	37	63%	78%
	Black Caribbean	3	5%	3%
	Black African	11	19%	4%
	Indian	2	3%	3%
	Pakistani	1	2%	4%
	Other Asian	3	5%	2%
<b>First Language</b>	First Language not English	9	15%	17%
	First Language English	50	85%	83%
<b>Mobility</b>	Joined school in Yrs 5 or 6	3	5%	8%

## School Absence (Year 3 to Year 6, 2013)

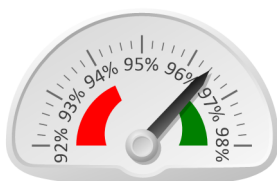
		Pupils	Absence		Persistent Absentees	
			School	National	School	National
<b>Summary</b>	All Pupils	241	4%	5%	3%	4%
	Girls	130	3%	5%	1%	4%
	Boys	111	5%	5%	5%	4%
<b>Prior Attainment</b>	Higher ability	79	3%	4%	1%	2%
	Middle ability	96	4%	5%	3%	3%
	Lower ability	61	5%	6%	5%	7%
<b>SEN</b>	SEN School Action	18	5%	6%	6%	7%
	SEN School Action +	18	8%	6%	6%	8%
	SEN Statement	3	♦	7%	♦	11%
	Not SEN	202	3%	4%	2%	4%
<b>Free School Meals</b>	FSM (in last 6 yrs)	52	4%	6%	2%	8%
	Not FSM (in last 6 yrs)	189	4%	4%	3%	3%
<b>Ethnicity</b>	White	136	5%	5%	4%	4%
	Black Caribbean	12	3%	5%	0%	6%
	Black African	72	2%	4%	3%	3%
	Indian	3	♦	5%	♦	4%
	Other Asian	9	2%	5%	0%	4%
	Any Other	4	♦	5%	♦	5%
<b>First Language</b>	First Language not English	75	2%	5%	0%	5%
	First Language English	166	4%	5%	4%	4%

Year 3 Attendance



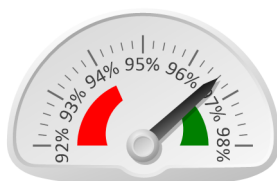
95.6%

Year 4 Attendance



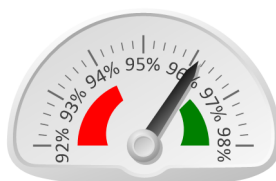
96.4%

Year 5 Attendance



96.6%

Year 6 Attendance



96.1%